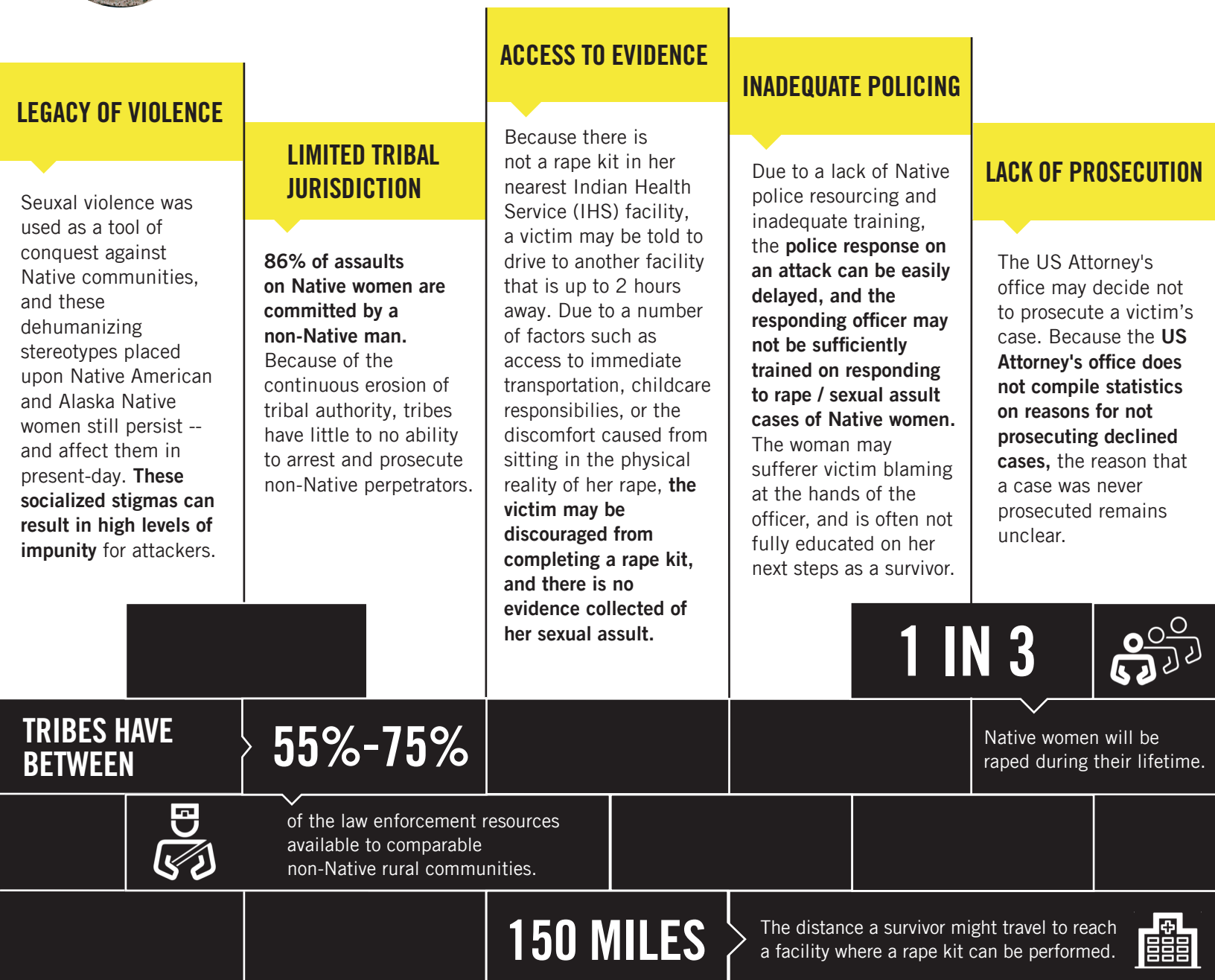


HIGH RATES OF RAPE AND THE BARRIERS TO JUSTICE FOR NATIVE WOMEN



J is a Cherokee woman living in Tahlequah, Oklahoma. Her sexual assault forensic examination was destroyed. Because of the lack of evidence available, the District Attorney advised her to drop the complaint after the preliminary hearing. **Native women like J face numerous forms of injustice during the prosecution and treatment of their sexual assaults, these are some of the barriers they can encounter.**



**THESE BARRIERS PERPETUATE
HIGH RATES OF RAPE AGAINST
NATIVE WOMEN**

If these barriers are not addressed, these rapes will keep happening with total impunity. To take action, visit www.amnestyusa.org

**AMNESTY
INTERNATIONAL**